

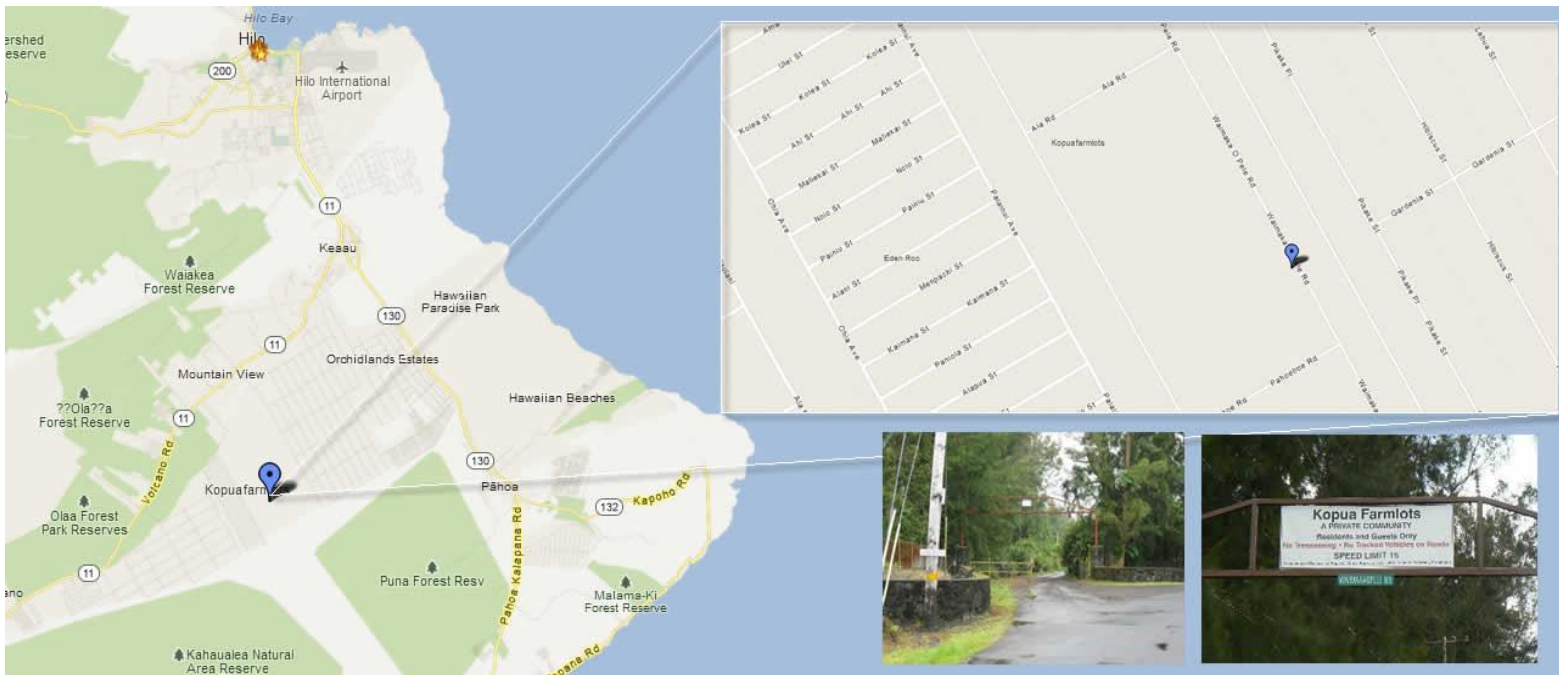
# Treehouse Directions

From Hilo or Keaau, go up Highway 11 towards Volcano. Pass Kurtistown (7/11 Gas Station). Go past Mountain View Mart and Mountain View Post Office (both on the right). Follow the road and the trees will get bigger. Pass mile marker 15, look for South Kopua Road on the left. If it's dark, South Kopua Road has a street light. Turn left onto South Kopua Road.

Follow South Kopua Road for about a mile until the road makes a sharp curve to the right. **BE CAREFUL, DANGEROUS CURVE, SLOW DOWN!** Go under the Kopua Farmlots sign (see photo below). Don't go around the curve. **IMPORTANT! Check or reset your car's odometer.**

**Go 3 miles.** Driveway is on the right but it's REALLY easy to miss. There's no gate, no markers and no entrance sign. I'll put something odd out front to mark the driveway. Usually it's a **blue** cooler.

**Pull all the way up into the driveway.** Follow the trail at the end of the driveway back to the house. **Txt Brent: 801-896-7656 or email [brentfm@gmail.com](mailto:brentfm@gmail.com)**  
Excited to see you. Looking forward to your visit.



How can we improve these directions for other guests? - Last Update: August 28th, 2022